

# **libcppa**

A C++ library for actor programming

## **User Manual**

libcppa version 0.9.3

Dominik Charousset

June 3, 2014

# Contents

<b>1</b>	<b>Introduction</b>	<b>1</b>
1.1	Actor Model . . . . .	1
1.2	Terminology . . . . .	1
1.2.1	Actor Address . . . . .	1
1.2.2	Actor Handle . . . . .	2
1.2.3	Untyped Actors . . . . .	2
1.2.4	Typed Actor . . . . .	2
1.2.5	Spawning . . . . .	2
1.2.6	Monitoring . . . . .	2
1.2.7	Link . . . . .	2
<b>2</b>	<b>First Steps</b>	<b>3</b>
2.1	Features Overview . . . . .	3
2.2	Supported Compilers . . . . .	3
2.3	Supported Operating Systems . . . . .	3
2.4	Hello World Example . . . . .	4
<b>3</b>	<b>Copy-On-Write Tuples</b>	<b>5</b>
3.1	Dynamically Typed Tuples . . . . .	5
3.2	Casting Tuples . . . . .	6
<b>4</b>	<b>Pattern Matching</b>	<b>7</b>
4.1	Basics . . . . .	7
4.2	Reducing Redundancy with “arg_match” and “on_arg_match” . . . . .	8
4.3	Atoms . . . . .	8
4.4	Wildcards . . . . .	9
4.5	Guards . . . . .	9
4.5.1	Placeholder Interface . . . . .	10
4.5.2	Examples for Guard Expressions . . . . .	10
4.6	Projections and Extractors . . . . .	11

<b>5</b>	<b>Actors</b>	<b>12</b>
5.1	Implicit <code>self</code> Pointer . . . . .	12
5.2	Interface . . . . .	13
<b>6</b>	<b>Sending Messages</b>	<b>14</b>
6.1	Replying to Messages . . . . .	15
6.2	Delaying Messages . . . . .	15
6.3	Forwarding Messages in Untyped Actors . . . . .	16
<b>7</b>	<b>Receiving Messages</b>	<b>17</b>
7.1	Class-based actors . . . . .	17
7.2	Nesting Receives Using <code>become/unbecome</code> . . . . .	19
7.3	Timeouts . . . . .	20
7.4	Skipping Messages . . . . .	21
<b>8</b>	<b>Synchronous Communication</b>	<b>22</b>
8.1	Error Messages . . . . .	22
8.2	Receive Response Messages . . . . .	23
8.3	Synchronous Failures and Error Handlers . . . . .	23
8.3.1	Continuations for Event-based Actors . . . . .	24
<b>9</b>	<b>Management &amp; Error Detection</b>	<b>25</b>
9.1	Links . . . . .	25
9.2	Monitors . . . . .	25
9.3	Error Codes . . . . .	26
9.4	Attach Cleanup Code to an Actor . . . . .	26
<b>10</b>	<b>Spawning Actors</b>	<b>27</b>
<b>11</b>	<b>Message Priorities</b>	<b>28</b>
<b>12</b>	<b>Network Transparency</b>	<b>29</b>
12.1	Publishing of Actors . . . . .	29
12.2	Connecting to Remote Actors . . . . .	29

<b>13 Network IO</b>	<b>30</b>
13.1 Spawning Brokers . . . . .	30
13.2 Broker Interface . . . . .	31
13.3 Broker-related Message Types . . . . .	32
<b>14 Group Communication</b>	<b>33</b>
14.1 Anonymous Groups . . . . .	33
14.2 Local Groups . . . . .	33
14.3 Remote Groups . . . . .	33
14.4 Spawning Actors in Groups . . . . .	34
<b>15 Platform-Independent Type System</b>	<b>35</b>
15.1 User-Defined Data Types in Messages . . . . .	35
<b>16 Blocking API</b>	<b>36</b>
16.1 Receiving Messages . . . . .	36
16.2 Receiving Synchronous Responses . . . . .	38
<b>17 Strongly Typed Actors</b>	<b>39</b>
17.1 Spawning Typed Actors . . . . .	39
17.2 Class-based Typed Actors . . . . .	40
<b>18 Common Pitfalls</b>	<b>42</b>
18.1 Event-Based API . . . . .	42
18.2 Synchronous Messages . . . . .	42
18.3 Sending Messages . . . . .	42
18.4 Sharing . . . . .	42
18.5 Constructors of Class-based Actors . . . . .	42
<b>19 Appendix</b>	<b>43</b>
19.1 Class <code>option</code> . . . . .	43
19.2 Using <code>about</code> – A Concurrency-safe Wrapper for <code>cout</code> . . . . .	44

# 1 Introduction

Before diving into the API of *libcppa*, we would like to take the opportunity to discuss the concepts behind *libcppa* and to explain the terminology used in this manual.

## 1.1 Actor Model

The actor model describes concurrent entities – actors – that do not share state and communicate only via message passing. By decoupling concurrently running software components via message passing, the actor model avoids race conditions by design. Actors can create – “spawn” – new actors and monitor each other to build fault-tolerant, hierarchical systems. Since message passing is network transparent, the actor model applies to both concurrency and distribution.

When dealing with dozens of cores, mutexes, semaphores and other threading primitives are the wrong level of abstraction. Implementing applications on top of those primitives has proven challenging and error-prone. Additionally, mutex-based implementations can cause queueing and unmindful access to (even distinct) data from separate threads in parallel can lead to false sharing – both decreasing performance significantly, up to the point that an application actually runs slower when adding more cores.

The actor model has gained momentum over the last decade due to its high level of abstraction and its ability to make efficient use of multicore and multiprocessor machines. However, the actor model has not yet been widely adopted in the native programming domain. With *libcppa*, we contribute a library for actor programming in C++ as open source software to ease native development of concurrent as well as distributed systems. In this regard, *libcppa* follows the C++ philosophy “building the highest abstraction possible without sacrificing performance”.

## 1.2 Terminology

You will find that *libcppa* has not simply adopted existing implementations based on the actor model such as Erlang or the Akka library. Instead, *libcppa* aims to provide a modern C++ API allowing for type-safe as well as dynamically typed messaging. Hence, most aspects of our system are familiar to developers having experience with other actor systems, but there are also slight differences in terminology. However, neither *libcppa* nor this manual require any foreknowledge.

### 1.2.1 Actor Address

In *libcppa*, each actor has a (network-wide) unique logical address that can be used to identify and monitor it. However, the address can *not* be used to send a message to an actor. This limitation is due to the fact that the address does not contain any type information about the actor. Hence, it would not be safe to send it any message, because the actor might use a strictly typed messaging interface not accepting the given message.

### 1.2.2 Actor Handle

An actor handle contains the address of an actor along with its type information. In order to send an actor a message, one needs to have a handle to it – the address alone is not sufficient. The distinction between handles and addresses – which is unique to *libcppa* when comparing it to other actor systems – is a consequence of the design decision to support both untyped and typed actors.

### 1.2.3 Untyped Actors

An untyped actor does not constrain the type of messages it receives, i.e., a handle to an untyped actor accepts any kind of message. That does of course not mean that untyped actors must handle all possible types of messages. Choosing typed vs untyped actors is mostly a matter of taste. Untyped actors allow developers to build prototypes faster, while typed actors allow the compiler to fetch more errors at compile time.

### 1.2.4 Typed Actor

A typed actor defines its messaging interface, i.e., both input and output types, in its type. This allows the compiler to check message types statically.

### 1.2.5 Spawning

“Spawning” an actor means to create and run a new actor.

### 1.2.6 Monitoring

A monitored actor sends a “down message” to all actors monitoring it as part of its termination. This allows actors to supervise other actors and to take measures when one of the supervised actors failed, i.e., terminated with a non-normal exit reason.

### 1.2.7 Link

A link is bidirectional connection between two actors. Each actor sends an “exit message” to all of its links as part of its termination. Unlike down messages (cf. 1.2.6), the default behavior for received exit messages causes the receiving actor to terminate for the same reason if the link has failed, i.e., terminated with a non-normal exit reason. This allows developers to create a set of actors with the guarantee that either all or no actors are alive. The default behavior can be overridden, i.e., exit message can be “trapped”. When trapping exit messages, they are received as any other ordinary message and can be handled by the actor.

## 2 First Steps

To compile *libcppa*, you will need CMake and a C++11 compiler. To get and compile the sources, open a terminal (on Linux or Mac OS X) and type:

```
git clone git://github.com/Neverlord/libcppa.git
cd libcppa
./configure
make
make install [as root, optional]
```

It is recommended to run the unit tests as well:

```
make test
```

Please submit a bug report that includes (a) your compiler version, (b) your OS, and (c) the content of the file `build/Testing/Temporary/LastTest.log` if an error occurs.

### 2.1 Features Overview

- Lightweight, fast and efficient actor implementations
- Network transparent messaging
- Error handling based on Erlang's failure model
- Pattern matching for messages as internal DSL to ease development
- Thread-mapped actors for soft migration of existing applications
- Publish/subscribe group communication

### 2.2 Supported Compilers

- GCC  $\geq 4.7$
- Clang  $\geq 3.2$

### 2.3 Supported Operating Systems

- Linux
- Mac OS X
- *Note for MS Windows:* *libcppa* relies on C++11 features such as unrestricted unions. We will support this platform as soon as Microsoft's compiler implements all required C++11 features. In the meantime, *libcppa* can be used with MinGW.

## 2.4 Hello World Example

```
#include <string>
#include <iostream>

#include "cppa/cppa.hpp"

using namespace std;
using namespace cppa;

behavior mirror(event_based_actor* self) {
    // return the (initial) actor behavior
    return {
        // a handler for messages containing a single string
        // that replies with a string
        [=](const string& what) -> string {
            // prints "Hello World!" via aout
            // (thread-safe cout wrapper)
            aout(self) << what << endl;
            // terminates this actor
            // ('become' otherwise loops forever)
            self->quit();
            // reply "!dlroW olleH"
            return string(what.rbegin(), what.rend());
        }
    };
}

void hello_world(event_based_actor* self, const actor& buddy) {
    // send "Hello World!" to our buddy ...
    self->sync_send(buddy, "Hello World!").then(
        // ... wait for a response ...
        [=](const string& what) {
            // ... and print it
            aout(self) << what << endl;
        }
    );
}

int main() {
    // create a new actor that calls 'mirror()'
    auto mirror_actor = spawn(mirror);
    // create another actor that calls 'hello_world(mirror_actor)';
    spawn(hello_world, mirror_actor);
    // wait until all other actors we have spawned are done
    await_all_actors_done();
    // run cleanup code before exiting main
    shutdown();
}
```



### 3 Copy-On-Write Tuples

The message passing implementation of *libcoppa* uses tuples with call-by-value semantic. Hence, it is not necessary to declare message types, though, *libcoppa* allows users to use user-defined types in messages (see Section 15.1). A call-by-value semantic would cause multiple copies of a tuple if it is send to multiple actors. To avoid unnecessary copying overhead, *libcoppa* uses a copy-on-write tuple implementation. A tuple is implicitly shared between any number of actors, as long as all actors demand only read access. Whenever an actor demands write access, it has to copy the data first if more than one reference to it exists. Thus, race conditions cannot occur and each tuple is copied only if necessary.

The interface of `cow_tuple` strictly distinguishes between `const` and non-`const` access. The template function `get` returns an element as immutable value, while `get_ref` explicitly returns a mutable reference to the required value and detaches the tuple if needed. We do not provide a `const` overload for `get`, because this would cause to unintended, and thus unnecessary, copying overhead.

```
auto x1 = make_cow_tuple(1, 2, 3);           // cow_tuple<int, int, int>
auto x2 = x1;                               // cow_tuple<int, int, int>
assert(&get<0>(x1) == &get<0>(x2));          // point to the same data
get_ref<0>(x1) = 10;                         // detaches x1 from x2
//get<0>(x1) = 10;                          // compiler error
assert(get<0>(x1) == 10);                    // x1 is now {10, 2, 3}
assert(get<0>(x2) == 1);                     // x2 is still {1, 2, 3}
assert(&get<0>(x1) != &get<0>(x2));          // no longer the same
```

#### 3.1 Dynamically Typed Tuples

The class `any_tuple` represents a tuple without static type information. All messages send between actors use this tuple type. The type information can be either explicitly accessed for each element or the original tuple, or a subtuple of it, can be restored using `tuple_cast`. Users of *libcoppa* usually do not need to know about `any_tuple`, since it is used “behind the scenes”. However, `any_tuple` can be created from a `cow_tuple` or by using `make_any_tuple`, as shown below.

```
auto x1 = make_cow_tuple(1, 2, 3);           // cow_tuple<int, int, int>
any_tuple x2 = x1;                           // any_tuple
any_tuple x3 = make_cow_tuple(10, 20);       // any_tuple
auto x4 = make_any_tuple(42);                // any_tuple
```

## 3.2 Casting Tuples

The function `tuple_cast` restores static type information from an `any_tuple` object. It returns an option (see Section 19.1) for a `cow_tuple` of the requested types.

```
auto x1 = make_any_tuple(1, 2, 3);
auto x2_opt = tuple_cast<int, int, int>(x1);
assert(x2_opt.valid());
auto x2 = *x2_opt;
assert(get<0>(x2) == 1);
assert(get<1>(x2) == 2);
assert(get<2>(x2) == 3);
```

The function `tuple_cast` can be used with wildcards (see Section 4.4) to create a view to a subset of the original data. No elements are copied, unless the tuple becomes detached.

```
auto x1 = make_cow_tuple(1, 2, 3);
any_tuple x2 = x1;
auto x3_opt = tuple_cast<int, anything, int>(x2);
assert(x3_opt.valid());
auto x3 = *x3_opt;
assert(get<0>(x3) == 1);
assert(get<1>(x3) == 3);
assert(&get<0>(x3) == &get<0>(x1));
assert(&get<1>(x3) == &get<2>(x1));
```

## 4 Pattern Matching

C++ does not provide pattern matching facilities. A general pattern matching solution for arbitrary data structures would require a language extension. Hence, we decided to restrict our implementation to tuples, to be able to use an internal domain-specific language approach.

### 4.1 Basics

A match expression begins with a call to the function `on`, which returns an intermediate object providing the member function `when` and `operator>>`. The right-hand side of the operator denotes a callback, usually a lambda expression, that should be invoked if a tuple matches the types given to `on`, as shown in the example below.

```
on<int>() >> [] (int i) { /*...*/ }
on<int, float>() >> [] (int i, float f) { /*...*/ }
on<int, int, int>() >> [] (int a, int b, int c) { /*...*/ }
```

The result of `operator>>` is a *match statement*. A partial function can consist of any number of match statements. At most one callback is invoked, since the evaluation stops at the first match.

```
partial_function fun {
  on<int>() >> [] (int i) {
    // case1
  },
  on<int>() >> [] (int i) {
    // case2; never invoked, since case1 always matches first
  }
};
```

The function “on” can be used in two ways. Either with template parameters only or with function parameters only. The latter version deduces all types from its arguments and matches for both type and value. To match for any value of a given type, “val” can be used, as shown in the following example.

```
on(42) >> [] (int i) { assert(i == 42); }
on("hello world") >> [] { /* ... */ }
on("print", val<std::string>) >> [] (const std::string& what) {
  // ...
}
```

**Note:** The given callback can have less arguments than the pattern. But it is only allowed to skip arguments from left to right.

```
on<int, float, double>() >> [] (double) { /*...*/ } // ok
on<int, float, double>() >> [] (float, double) { /*...*/ } // ok
on<int, float, double>() >> [] (int, float, double) { /*...*/ } // ok

on<int, float, double>() >> [] (int i) { /*...*/ } // compiler error
```

## 4.2 Reducing Redundancy with “arg\_match” and “on\_arg\_match”

Our previous examples always used the most verbose form, which is quite redundant, since you have to type the types twice – as template parameter and as argument type for the lambda. To avoid such redundancy, `arg_match` can be used as last argument to the function `on`. This causes the compiler to deduce all further types from the signature of the given callback.

```
on<int, int>() >> [](int a, int b) { /*...*/ }  
// is equal to:  
on(arg_match) >> [](int a, int b) { /*...*/ }
```

Note that the second version does call `on` without template parameters. Furthermore, `arg_match` must be passed as last parameter. If all types should be deduced from the callback signature, `on_arg_match` can be used. It is equal to `on(arg_match)`. However, when using a pattern to initialize the behavior of an actor, `on_arg_match` is used implicitly whenever a functor is passed without preceding it with an `on` clause.

```
on_arg_match >> [](const std::string& str) { /*...*/ }
```

## 4.3 Atoms

Assume an actor provides a mathematical service for integers. It takes two arguments, performs a predefined operation and returns the result. It cannot determine an operation, such as multiply or add, by receiving two operands. Thus, the operation must be encoded into the message. The Erlang programming language introduced an approach to use non-numerical constants, so-called *atoms*, which have an unambiguous, special-purpose type and do not have the runtime overhead of string constants. Atoms are mapped to integer values at compile time in *libcppa*. This mapping is guaranteed to be collision-free and invertible, but limits atom literals to ten characters and prohibits special characters. Legal characters are “\_0-9A-Za-z” and the whitespace character. Atoms are created using the `constexpr` function `atom`, as the following example illustrates.

```
on(atom("add"), arg_match) >> [](int a, int b) { /*...*/ },  
on(atom("multiply"), arg_match) >> [](int a, int b) { /*...*/ },  
// ...
```

**Note:** The compiler cannot enforce the restrictions at compile time, except for a length check. The assertion `atom("!?") != atom("?!")` is not true, because each invalid character is mapped to the whitespace character.

## 4.4 Wildcards

The type `anything` can be used as wildcard to match any number of any types. A pattern created by `on<anything>()` or its alias `others()` is useful to define a default case. For patterns defined without template parameters, the `constexpr` value `any_vals` can be used as function argument. The constant `any_vals` is of type `anything` and is nothing but syntactic sugar for defining patterns.

```
on<int, anything>() >> [](int i) {
    // tuple with int as first element
},
on(any_vals, arg_match) >> [](int i) {
    // tuple with int as last element
    // "on(any_vals, arg_match)" is equal to "on(anything{}, arg_match)"
},
others() >> [] {
    // everything else (default handler)
    // "others()" is equal to "on<anything>()" and "on(any_vals)"
}
```

## 4.5 Guards

Guards can be used to constrain a given match statement by using placeholders, as the following example illustrates.

```
using namespace cppa::placeholders; // contains _x1 - _x9

on<int>().when(_x1 % 2 == 0) >> [] {
    // int is even
},
on<int>() >> [] {
    // int is odd
}
```

Guard expressions are a lazy evaluation technique. The placeholder `_x1` is substituted with the first value of a given tuple. All binary comparison and arithmetic operators are supported, as well as `&&` and `||`. In addition, there are three functions designed to be used in guard expressions: `gref` (“guard reference”), `gval` (“guard value”), and `gcall` (“guard function call”). The function `gref` creates a reference wrapper, while `gval` encloses a value. It is similar to `std::ref` but it is always `const` and “lazy”. A few examples to illustrate some pitfalls:

```
int val = 42;

on<int>().when(_x1 == val)           // (1) matches if _x1 == 42
on<int>().when(_x1 == gref(val))     // (2) matches if _x1 == val
on<int>().when(_x1 == std::ref(val)) // (3) ok, because of placeholder
others().when(gref(val) == 42)      // (4) matches everything
                                   // as long as val == 42
others().when(std::ref(val) == 42)  // (5) compiler error
```

Statement (5) is evaluated immediately and returns a boolean, whereas statement (4) creates a valid guard expression. Thus, you should always use `gref` instead of `std::ref` to avoid errors.

The second function, `gcall`, encapsulates a function call. Its usage is similar to `std::bind`, but there is also a short version for unary functions: `gcall(fun, _x1)` is equal to `_x1(fun)`.

```
auto vec_sorted = [] (const std::vector<int>& vec) {
    return std::is_sorted(vec.begin(), vec.end());
};
```

```
on<std::vector<int>>().when(gcall(vec_sorted, _x1)) // is equal to:
on<std::vector<int>>().when(_x1(vec_sorted))
```

#### 4.5.1 Placeholder Interface

```
template<int X>
struct guard_placeholder;
```

**Member functions** (`x` represents the value at runtime, `y` represents an iterable container)

<code>size()</code>	Returns <code>x.size()</code>
<code>empty()</code>	Returns <code>x.empty()</code>
<code>not_empty()</code>	Returns <code>!x.empty()</code>
<code>front()</code>	Returns an option (see Section 19.1) to <code>x.front()</code>
<code>in(y)</code>	Returns <code>true</code> if <code>y</code> contains <code>x</code> , <code>false</code> otherwise
<code>not_in(y)</code>	Returns <code>!in(y)</code>

#### 4.5.2 Examples for Guard Expressions

```
using namespace std;
typedef vector<int> ivec;

vector<string> strings{"abc", "def"};

on_arg_match.when(_x1.front() == 0) >> [] (const ivec& v) {
    // note: we don't have to check whether _x1 is empty in our guard,
    //       because '_x1.front()' returns an option for a
    //       reference to the first element
    assert(v.size() >= 1);
    assert(v.front() == 0);
},
on<int>().when(_x1.in({10, 20, 30})) >> [] (int i) {
    assert(i == 10 || i == 20 || i == 30);
},
on<string>().when(_x1.not_in(strings)) >> [] (const string& str) {
    assert(str != "abc" && str != "def");
},
on<string>().when(_x1.size() == 10) >> [] (const string& str) {
    // ...
}
```

## 4.6 Projections and Extractors

Projections perform type conversions or extract data from a given input. If a callback expects an integer but the received message contains a string, a projection can be used to perform a type conversion on-the-fly. This conversion should be free of side-effects and, in particular, shall not throw exceptions, because a failed projection is not an error. A pattern simply does not match if a projection failed. Let us have a look at a simple example.

```
auto intproj = [] (const string& str) -> option<int> {
    char* endptr = nullptr;
    int result = static_cast<int>(strtol(str.c_str(), &endptr, 10));
    if (endptr != nullptr && *endptr == '\\0') return result;
    return {};
};

partial_function fun {
    on(intproj) >> [] (int i) {
        // case 1: successfully converted a string
    },
    on_arg_match >> [] (const string& str) {
        // case 2: str is not an integer
    }
};
```

The lambda `intproj` is a `string  $\Rightarrow$  int` projection, but note that it does not return an integer. It returns `option<int>`, because the projection is not guaranteed to always succeed. An empty `option` indicates, that a value does not have a valid mapping to an integer. A pattern does not match if a projection failed.

**Note:** Functors used as projection must take exactly one argument and must return a value. The types for the pattern are deduced from the functor's signature. If the functor returns an `option<T>`, then `T` is deduced.

## 5 Actors

*libcppa* provides several actor implementations, each covering a particular use case. The class `local_actor` is the base class for all implementations, except for (remote) proxy actors. Hence, `local_actor` provides a common interface for actor operations like trapping exit messages or finishing execution. The default actor implementation in *libcppa* is event-based. Event-based actors have a very small memory footprint and are thus very lightweight and scalable. Context-switching actors are used for actors that make use of the blocking API (see Section 16), but do not need to run in a separate thread. Context-switching and event-based actors are scheduled cooperatively in a thread pool. Thread-mapped actors can be used to opt-out of this cooperative scheduling.

### 5.1 Implicit `self` Pointer

When using a function or functor to implement an actor, the first argument *can* be used to capture a pointer to the actor itself. The type of this pointer is `event_based_actor*` per default and `blocking_actor*` when using the `blocking_api` flag. When dealing with typed actors, the types are `typed_event_based_actor<...>*` and `typed_blocking_actor<...>*`.



## 5.2 Interface

```
class local_actor;
```

### Member functions

<code>quit(uint32_t reason = normal)</code>	Finishes execution of this actor
<b>Observers</b>	
<code>bool trap_exit()</code>	Checks whether this actor traps exit messages
<code>any_tuple last_dequeued()</code>	Returns the last message that was dequeued from the actor's mailbox <b>Note:</b> Only set during callback invocation
<code>actor_addr last_sender()</code>	Returns the sender of the last dequeued message <b>Note:</b> Only set during callback invocation
<code>vector&lt;group&gt; joined_groups()</code>	Returns all subscribed groups
<b>Modifiers</b>	
<code>void trap_exit(bool enabled)</code>	Enables or disables trapping of exit messages
<code>void join(const group&amp; g)</code>	Subscribes to group <code>g</code>
<code>void leave(const group&amp; g)</code>	Unsubscribes group <code>g</code>
<code>void on_sync_failure(auto fun)</code>	Sets a handler, i.e., a functor taking no arguments, for unexpected synchronous response messages (default action is to kill the actor for reason <code>unhandled_sync_failure</code> )
<code>void on_sync_timeout(auto fun)</code>	Sets a handler, i.e., a functor taking no arguments, for <code>timed_sync_send</code> timeout messages (default action is to kill the actor for reason <code>unhandled_sync_timeout</code> )
<code>void monitor(actor_ptr whom)</code>	Adds a unidirectional monitor to <code>whom</code> (see Section 9.2)
<code>void demonitor(actor_ptr whom)</code>	Removes a monitor from <code>whom</code>
<code>bool has_sync_failure_handler()</code>	Checks whether this actor has a user-defined sync failure handler

## 6 Sending Messages

Messages can be sent by using the member function `send` or `send_tuple`. The variadic template function `send` has the following signature.

```
template<typename... Args>
void send(actor whom, Args&&... what);
```

The variadic template pack `what...` is converted to a dynamically typed tuple (see Section 3.1) and then enqueued to the mailbox of `whom`.

Using the function `send` is more compact, but does not have any other benefit. However, note that you should not use `send` if you already have an instance of `any_tuple`, because it creates a new tuple containing the old one.

```
void some_fun(event_based_actor* self) {
    actor other = spawn(...);
    auto msg = make_any_tuple(1, 2, 3);
    self->send(other, msg); // oops, creates a new tuple containing msg
    self->send_tuple(other, msg); // ok
}
```

## 6.1 Replying to Messages

The return value of a message handler is used as response message. Actors can also use the result of a `sync_send` to answer to a request, as shown below.

```
void client(event_based_actor* self, const actor& master) {
    become (
        on("foo", arg_match) >> [=](const string& request) {
            return self->sync_send(master, atom("bar"), request).then(
                on_arg_match >> [=](const std::string& response) {
                    return response;
                }
            );
        }
    );
};
```

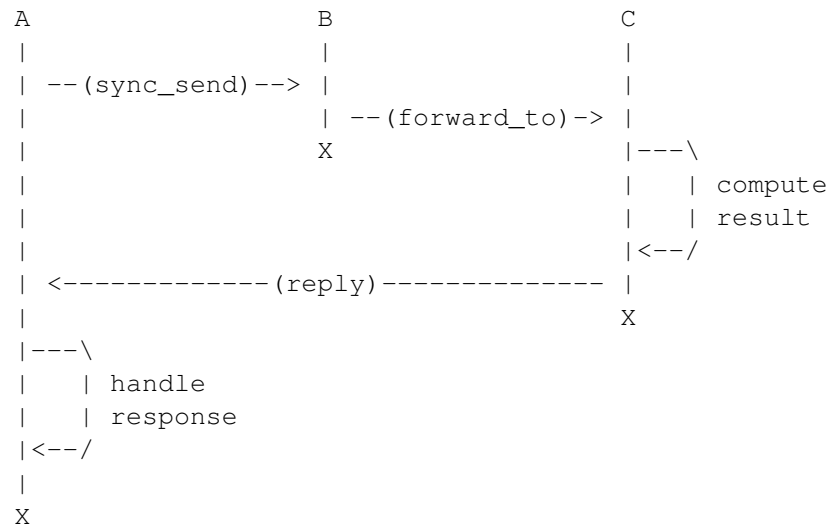
## 6.2 Delaying Messages

Messages can be delayed, e.g., to implement time-based polling strategies, by using one of `delayed_send`, `delayed_send_tuple`, `delayed_reply`, or `delayed_reply_tuple`. The following example illustrates a polling strategy using `delayed_send`.

```
behavior poller(event_based_actor* self) {
    self->delayed_send(self, std::chrono::seconds(1), atom("poll"));
    return {
        on(atom("poll")) >> [] {
            // poll a resource
            // ...
            // schedule next polling
            self->delayed_send(self, std::chrono::seconds(1), atom("poll"));
        }
    };
}
```

### 6.3 Forwarding Messages in Untyped Actors

The member function `forward_to` forwards the last dequeued message to an other actor. Forwarding a synchronous message will also transfer responsibility for the request, i.e., the receiver of the forwarded message can reply as usual and the original sender of the message will receive the response. The following diagram illustrates forwarding of a synchronous message from actor B to actor C.



The forwarding is completely transparent to actor C, since it will see actor A as sender of the message. However, actor A will see actor C as sender of the response message instead of actor B and thus could recognize the forwarding by evaluating `self->last_sender()`.

## 7 Receiving Messages

The current *behavior* of an actor is its response to the *next* incoming message and includes (a) sending messages to other actors, (b) creation of more actors, and (c) setting a new behavior.

An event-based actor, i.e., the default implementation in *libcppa*, uses `become` to set its behavior. The given behavior is then executed until it is replaced by another call to `become` or the actor finishes execution.

### 7.1 Class-based actors

A class-based actor is a subtype of `event_based_actor` and must implement the pure virtual member function `make_behavior` returning the initial behavior.

```
class printer : public event_based_actor {
    behavior make_behavior() override {
        return {
            others() >> [] {
                cout << to_string(last_received()) << endl;
            }
        };
    }
};
```

Another way to implement class-based actors is provided by the class `sb_actor` (“State-Based Actor”). This base class simply returns `init_state` (defined in the subclass) from its implementation for `make_behavior`.

```
struct printer : sb_actor<printer> {
    behavior init_state {
        others() >> [] {
            cout << to_string(last_received()) << endl;
        }
    };
};
```

Note that `sb_actor` uses the Curiously Recurring Template Pattern. Thus, the derived class must be given as template parameter. This technique allows `sb_actor` to access the `init_state` member of a derived class. The following example illustrates a more advanced state-based actor that implements a stack with a fixed maximum number of elements.

## RECEIVING MESSAGES

---

```
class fixed_stack : public sb_actor<fixed_stack> {

    friend class sb_actor<fixed_stack>;

    size_t max_size;

    vector<int> data;

    behavior full;
    behavior filled;
    behavior empty;

    behavior& init_state = empty;

public:

    fixed_stack(size_t max) : max_size(max) {
        full = (
            on(atom("push"), arg_match) >> [=](int) { /* discard */ },
            on(atom("pop")) >> [=]() -> cow_tuple<atom_value, int> {
                auto result = data.back();
                data.pop_back();
                become(filled);
                return {atom("ok"), result};
            }
        );
        filled = (
            on(atom("push"), arg_match) >> [=](int what) {
                data.push_back(what);
                if (data.size() == max_size) become(full);
            },
            on(atom("pop")) >> [=]() -> cow_tuple<atom_value, int> {
                auto result = data.back();
                data.pop_back();
                if (data.empty()) become(empty);
                return {atom("ok"), result};
            }
        );
        empty = (
            on(atom("push"), arg_match) >> [=](int what) {
                data.push_back(what);
                become(filled);
            },
            on(atom("pop")) >> [=] {
                return atom("failure");
            }
        );
    }

};
```

## 7.2 Nesting Receives Using `become/unbecome`

Since `become` does not block, an actor has to manipulate its behavior stack to achieve nested receive operations. An actor can set a new behavior by calling `become` with the `keep_behavior` policy to be able to return to its previous behavior later on by calling `unbecome`, as shown in the example below.

```
// receives {int, float} sequences
behavior testee(event_based_actor* self) {
    return {
        [=](int value1) {
            self->become (
                // the keep_behavior policy stores the current behavior
                // on the behavior stack to be able to return to this
                // behavior later on by calling unbecome()
                keep_behavior,
                [=](float value2) {
                    cout << value1 << " ==> " << value2 << endl;
                    // restore previous behavior
                    self->unbecome();
                }
            );
        }
    };
}
```

An event-based actor finishes execution with normal exit reason if the behavior stack is empty after calling `unbecome`. The default policy of `become` is `discard_behavior` that causes an actor to override its current behavior. The policy flag must be the first argument of `become`.

**Note:** the message handling in *libcppa* is consistent among all actor implementations: unmatched messages are *never* implicitly discarded if no suitable handler was found. Hence, the order of arrival is not important in the example above. This is unlike other event-based implementations of the actor model such as Akka for instance.

## 7.3 Timeouts

A behavior set by `become` is invoked whenever a new messages arrives. If no message ever arrives, the actor would wait forever. This might be desirable if the actor only provides a service and should not do anything else. But often, we need to be able to recover if an expected messages does not arrive within a certain time period. The following examples illustrates the usage of `after` to define a timeout.

```
#include <chrono>
#include <iostream>
#include "cppa/cppa.hpp"

using std::endl;

behavior eager_actor(event_based_actor* self) {
    return {
        [] (int i) { /* ... */ },
        [] (float i) { /* ... */ },
        others() >> [] { /* ... */ },
        after(std::chrono::seconds(10)) >> [] {
            aout(self) << "received nothing within 10 seconds..." << endl;
            // ...
        }
    };
}
```

Callbacks given as timeout handler must have zero arguments. Any number of patterns can precede the timeout definition, but “`after`” must always be the final statement. Using a zero-duration timeout causes the actor to scan its mailbox once and then invoke the timeout immediately if no matching message was found.

*libcppa* supports timeouts using `minutes`, `seconds`, `milliseconds` and `microseconds`. However, note that the precision depends on the operating system and your local work load. Thus, you should not depend on a certain clock resolution.



## 7.4 Skipping Messages

Unmatched messages are skipped automatically by *libcppa*'s runtime system. This is true for *all* actor implementations. To allow actors to skip messages manually, `skip_message` can be used. This is in particular useful whenever an actor switches between behaviors, but wants to use a default rule created by `others()` to filter messages that are not handled by any of its behaviors.

The following example illustrates a simple server actor that dispatches requests to workers. After receiving an `'idle'` message, it awaits a request that is then forwarded to the idle worker. Afterwards, the server returns to its initial behavior, i.e., awaits the next `'idle'` message. The server actor will exit for reason `user_defined` whenever it receives a message that is neither a request, nor an idle message.

```
behavior server(event_based_actor* self) {
  auto die = [=] { self->quit(exit_reason::user_defined); };
  return {
    on(atom("idle")) >> [=] {
      auto worker = last_sender();
      self->become (
        keep_behavior,
        on(atom("request")) >> [=] {
          // forward request to idle worker
          self->forward_to(worker);
          // await next idle message
          self->unbecome();
        },
        on(atom("idle")) >> skip_message,
        others() >> die
      );
    },
    on(atom("request")) >> skip_message,
    others() >> die
  };
}
```

## 8 Synchronous Communication

*libcppa* supports both asynchronous and synchronous communication. The member functions `sync_send` and `sync_send_tuple` send synchronous request messages.

```
template<typename... Args>
__unspecified__ sync_send(actor_ptr whom, Args&&... what);

__unspecified__ sync_send_tuple(actor_ptr whom, any_tuple what);

template<typename Duration, typename... Args>
__unspecified__ timed_sync_send(actor_ptr whom,
                                Duration timeout,
                                Args&&... what);

template<typename Duration, typename... Args>
__unspecified__ timed_sync_send_tuple(actor_ptr whom,
                                       Duration timeout,
                                       any_tuple what);
```

A synchronous message is sent to the receiving actor's mailbox like any other asynchronous message. The response message, on the other hand, is treated separately.

The difference between `sync_send` and `timed_sync_send` is how timeouts are handled. The behavior of `sync_send` is analogous to `send`, i.e., timeouts are specified by using `after(...)` statements (see 7.3). When using `timed_sync_send` function, `after(...)` statements are ignored and the actor will receive a `sync_timeout_msg` after the given duration instead.

### 8.1 Error Messages

When using synchronous messaging, *libcppa*'s runtime environment will send ...

- if the receiver is not alive:  
`sync_exited_msg { actor_addr source; std::uint32_t reason; };`
- if a message send by `timed_sync_send` timed out: `sync_timeout_msg`

## 8.2 Receive Response Messages

When sending a synchronous message, the response handler can be passed by either using `then` (event-based actors) or `await` (blocking actors).

```
void foo(event_based_actor* self, actor testee) {
    // testee replies with a string to 'get'
    self->sync_send(testee, atom("get")).then(
        on_arg_match >> [=](const std::string& str) {
            // handle str
        },
        after(std::chrono::seconds(30)) >> [=]() {
            // handle error
        }
    );
};
```

Similar to `become`, the `then` function modifies an actor's behavior stack. However, it is used as "one-shot handler" and automatically returns to the previous behavior afterwards.

## 8.3 Synchronous Failures and Error Handlers

An unexpected response message, i.e., a message that is not handled by given behavior, will invoke the actor's `on_sync_failure` handler. The default handler kills the actor by calling `self->quit(exit_reason::unhandled_sync_failure)`. The handler can be overridden by calling `self->on_sync_failure(/*...*/)`.

Unhandled timeout messages trigger the `on_sync_timeout` handler. The default handler kills the actor for reason `exit_reason::unhandled_sync_failure`. It is possible set both error handlers by calling `self->on_sync_timeout_or_failure(/*...*/)`.

```
void foo(event_based_actor* self, actor testee) {
    // testee replies with a string to 'get'
    // set handler for unexpected messages
    self->on_sync_failure = [] {
        aout << "received: " << to_string(self->last_dequeued()) << endl;
    };
    // set handler for timeouts
    self->on_sync_timeout = [] {
        aout << "timeout occurred" << endl;
    };
    // set response handler by using "then"
    timed_sync_send(testee, std::chrono::seconds(30), atom("get")).then(
        [=](const std::string& str) { /* handle str */ }
    );
};
```

### 8.3.1 Continuations for Event-based Actors

*libcppa* supports continuations to enable chaining of send/receive statements. The function `then` returns a helper object offering the member function `continue_with`, which takes a functor *f* without arguments. After receiving a message, *f* is invoked if and only if the received messages was handled successfully, i.e., neither `sync_failure` nor `sync_timeout` occurred.

```
void foo(event_based_actor* self) {
    actor d_or_s = ...; // replies with either a double or a string
    sync_send(d_or_s, atom("get")).then(
        [=](double value) { /* functor f1 */ },
        [=](const string& value) { /* functor f2*/ }
    ).continue_with([=] {
        // this continuation is invoked in both cases
        // *after* f1 or f2 is done, but *not* in case
        // of sync_failure or sync_timeout
    });
}
```

## 9 Management & Error Detection

*libcppa* adapts Erlang's well-established fault propagation model. It allows to build actor subsystem in which either all actors are alive or have collectively failed.

### 9.1 Links

Linked actors monitor each other. An actor sends an exit message to all of its links as part of its termination. The default behavior for actors receiving such an exit message is to die for the same reason, if the exit reason is non-normal. Actors can *trap* exit messages to handle them manually.

```
actor worker = ...;
// receive exit messages as regular messages
self->trap_exit(true);
// monitor spawned actor
self->link_to(worker);
// wait until worker exited
self->become (
  [](const exit_msg& e) >> [=] {
    if (e.reason == exit_reason::normal) {
      // worker finished computation
    } else {
      // worker died unexpectedly
    }
  }
);
```

### 9.2 Monitors

A monitor observes the lifetime of an actor. Monitored actors send a down message to all observers as part of their termination. Unlike exit messages, down messages are always treated like any other ordinary message. An actor will receive one down message for each time it called `self->monitor(...)`, even if it adds a monitor to the same actor multiple times.

```
actor worker = ...;
// monitor spawned actor
self->monitor(worker);
// wait until worker exited
self->become (
  on(const down_msg& d) >> [] {
    if (d.reason == exit_reason::normal) {
      // worker finished computation
    } else {
      // worker died unexpectedly
    }
  }
);
```

### 9.3 Error Codes

All error codes are defined in the namespace `cppa::exit_reason`. To obtain a string representation of an error code, use `cppa::exit_reason::as_string(uint32_t)`.

<code>normal</code>	<code>1</code>	Actor finished execution without error
<code>unhandled_exception</code>	<code>2</code>	Actor was killed due to an unhandled exception
<code>unhandled_sync_failure</code>	<code>4</code>	Actor was killed due to an unexpected synchronous response message
<code>unhandled_sync_timeout</code>	<code>5</code>	Actor was killed, because no timeout handler was set and a synchronous message timed out
<code>user_shutdown</code>	<code>16</code>	Actor was killed by a user-generated event
<code>remote_link_unreachable</code>	<code>257</code>	Indicates that a remote actor became unreachable, e.g., due to connection error
<code>user_defined</code>	<code>65536</code>	Minimum value for user-defined exit codes

### 9.4 Attach Cleanup Code to an Actor

Actors can attach cleanup code to other actors. This code is executed immediately if the actor has already exited. Keep in mind that `self` refers to the currently running actor. Thus, `self` refers to the terminating actor and not to the actor that attached a functor to it.

```
auto worker = spawn(...);
actor observer = self;
// "monitor" spawned actor
worker->attach_functor([observer](std::uint32_t reason) {
    // this callback is invoked from worker
    anon_send(observer, atom("DONE"));
});
// wait until worker exited
self->become (
    on(atom("DONE")) >> [] {
        // worker terminated
    }
);
```

**Note:** It is possible to attach code to remote actors, but the cleanup code will run on the local machine.

## 10 Spawning Actors

Actors are created using the function `spawn`. The easiest way to implement actors is to use functors, e.g., a free function or lambda expression. The arguments to the functor are passed to `spawn` as additional arguments. The function `spawn` also takes optional flags as template parameter. The flag `detached` causes `spawn` to create a thread-mapped actor (opt-out of the cooperative scheduling), the flag `linked` links the newly created actor to its parent – not available on top-level `spawn` – and the flag `monitored` automatically adds a monitor to the new actor. Actors that make use of the blocking API (see Section 16) must be spawned using the flag `blocking_api`. Flags are concatenated using the operator `+`, as shown in the examples below.

```
#include "cppa/cppa.hpp"

using namespace cppa;

void my_actor1();
void my_actor2(event_based_actor*, int arg1, const std::string& arg2);
void ugly_duckling();

class my_actor3 : public event_based_actor { /* ... */ };
class my_actor4 : public sb_actor<my_actor4> {
public: my_actor4(int some_value) { /* ... */ }
    /* ... */
};

// whenever we want to link to or monitor a spawned actor,
// we have to spawn it using the self pointer, otherwise
// we can use the free function 'spawn' (top-level spawn)
void server(event_based_actor* self) {
    // spawn function-based actors
    auto a0 = spawn(my_actor1);
    auto a1 = self->spawn<linked>(my_actor2, 42, "hello actor");
    auto a2 = self->spawn<monitored>([] { /* ... */ });
    auto a3 = spawn([](int) { /* ... */ }, 42);
    // spawn thread-mapped actors
    auto a4 = spawn<detached>(my_actor1);
    auto a5 = self->spawn<detached + linked>([] { /* ... */ });
    auto a6 = spawn<detached>(my_actor2, 0, "zero");
    // spawn class-based actors
    auto a7 = spawn<my_actor3>();
    auto a8 = self->spawn<my_actor4, monitored>(42);
    // spawn thread-mapped actors using a class
    auto a9 = spawn<my_actor4, detached>(42);
    // spawn actors that need access to the blocking API
    auto aa = self->spawn<blocking_api>(ugly_duckling);
    // compiler error: my_actor2 captures the implicit
    // self pointer as event_based_actor* and thus cannot
    // be spawned using blocking_api flag
    /*-auto ab = self->spawn<blocking_api>(my_actor2);-*/
}
```

## 11 Message Priorities

By default, all messages have the same priority and actors ignore priority flags. Actors that should evaluate priorities must be spawned using the `priority_aware` flag. This flag causes the actor to use a priority-aware mailbox implementation. It is not possible to change this implementation dynamically at runtime.

```
behavior testee(event_based_actor* self) {
    // send 'b' with normal priority
    self->send(self, atom("b"));
    // send 'a' with high priority
    self->send(message_priority::high, self, atom("a"));
    // terminate after receiving a 'b'
    return {
        on(atom("b")) >> [=] {
            aout(self) << "received 'b' => quit" << endl;
            self->quit();
        },
        on(atom("a")) >> [=] {
            aout(self) << "received 'a'" << endl;
        },
    };
}

int main() {
    // will print "received 'b' => quit"
    spawn(testee);
    await_all_actors_done();
    // will print "received 'a'" and then "received 'b' => quit"
    spawn<priority_aware>(testee);
    await_all_actors_done();
    shutdown();
}
```



## 12 Network Transparency

All actor operations as well as sending messages are network transparent. Remote actors are represented by actor proxies that forward all messages.

### 12.1 Publishing of Actors

```
void publish(actor whom, std::uint16_t port, const char* addr = 0)
```

The function `publish` binds an actor to a given port. It throws `network_error` if socket related errors occur or `bind_failure` if the specified port is already in use. The optional `addr` parameter can be used to listen only to the given IP address. Otherwise, the actor accepts all incoming connections (`INADDR_ANY`).

```
publish(self, 4242);
self->become (
    on(atom("ping"), arg_match) >> [](int i) {
        return make_cow_tuple(atom("pong"), i);
    }
);
```

### 12.2 Connecting to Remote Actors

```
actor remote_actor(const char* host, std::uint16_t port)
```

The function `remote_actor` connects to the actor at given host and port. A `network_error` is thrown if the connection failed.

```
auto pong = remote_actor("localhost", 4242);
self->send(pong, atom("ping"), 0);
self->become (
    on(atom("pong"), 10) >> [=] {
        self->quit();
    },
    on(atom("pong"), arg_match) >> [=](int i) {
        return make_cow_tuple(atom("ping"), i+1);
    }
);
```

## 13 Network IO

When communicating to other services in the network, sometimes low-level socket IO is inevitable. For this reason, *libcoppa* provides *brokers*. A broker is an event-based actor running in the middleman that multiplexes socket IO. It can maintain any number of acceptors and connections. Since the broker runs in the middleman, implementations should be careful to consume as little time as possible in message handlers. Any considerable amount work should be outsourced by spawning new actors (or maintaining worker actors).

### 13.1 Spawning Brokers

Brokers are spawned using the function `spawn_io` and always use functor-based implementations capturing the self pointer of type `broker*`. For convenience, `spawn_io_server` can be used to spawn a new broker listening to a local port and `spawn_io_client` can be used to spawn a new broker that connects to given host and port or uses existing IO streams.

```
template<spawn_options Os = no_spawn_options,
        typename F = std::function<behavior (io::broker*)>,
        typename... Ts>
actor spawn_io(F fun, Ts&&... args);

template<spawn_options Os = no_spawn_options,
        typename F = std::function<behavior (io::broker*)>,
        typename... Ts>
actor spawn_io_client(F fun,
                    io::input_stream_ptr in,
                    io::output_stream_ptr out,
                    Ts&&... args);

template<spawn_options Os = no_spawn_options,
        typename F = std::function<behavior (io::broker*)>,
        typename... Ts>
actor spawn_io_client(F fun, string host, uint16_t port, Ts&&... args);

template<spawn_options Os = no_spawn_options,
        typename F = std::function<behavior (io::broker*)>,
        typename... Ts>
actor spawn_io_server(F fun, uint16_t port, Ts&&... args);
```

## 13.2 Broker Interface

```
class io::broker;
```

### Data Types

---

```
enum policy_flag { at_least, at_most, exactly }
```

---

### Member Functions

<code>void receive_policy(connection_handle hdl, policy_flag policy, size_t buffer_size)</code>	Modifies the receive policy for the connection identified by <code>hdl</code> . This will cause the middle-man to enqueue the next <code>new_data_msg</code> after <i>at least</i> , <i>at most</i> , or <i>exactly</i> <code>buffer_size</code> bytes have been read
<code>void write(connection_handle hdl, size_t num_bytes, const void* buf)</code>	Sends data
<code>void write(connection_handle hdl, const util::buffer&amp; buf)</code>	Sends data
<code>void write(connection_handle hdl, util::buffer&amp;&amp; buf)</code>	Sends data
<code>template&lt;typename F, typename... Ts&gt; actor fork(F fun, connection_handle hdl, Ts&amp;&amp;... args)</code>	Spawns a new broker that takes ownership of given connection
<code>size_t num_connections()</code>	Returns the number of open connections
<code>connection_handle add_connection(input_stream_ptr in, output_stream_ptr out)</code>	Adds a new connection from input and output stream
<code>connection_handle add_connection(stream_ptr sptr)</code>	Adds a new connection from an IO stream
<code>connection_handle add_tcp_connection(native_socket_type tcp_sockfd)</code>	Adds a new connection from a native TCP socket descriptor
<code>accept_handle add_acceptor(acceptor_uptr ptr)</code>	Adds a new acceptor
<code>accept_handle add_tcp_acceptor(native_socket_type tcp_sockfd)</code>	Adds a new acceptor from a native TCP socket descriptor

### 13.3 Broker-related Message Types

Brokers, just like any other dynamically typed actor, can receive messages of any type. However, it also receives system messages from the middleman:

```
struct new_connection_msg {
    io::accept_handle source;
    io::connection_handle handle;
};
```

A `new_connection_msg` is received whenever a new incoming connection (identified by the `handle` field) has been accepted for one of the broker's accept handles (identified by the `source` field).

```
struct new_data_msg {
    io::connection_handle handle;
    util::buffer buf;
};
```

A `new_data_msg` is received whenever data on a connection is ready. The data can be accessed as buffer object (see ??). The amount of data, i.e., how often this message is received, can be configured using the brokers receive policy (see ??).

It is worth mentioning that the buffer is re-used whenever possible. This means, as long as the broker does not create any new references to the message by copying it, the middleman will always use only a single buffer per connection.

```
struct connection_closed_msg {
    io::connection_handle handle;
};
```

A `connection_closed_msg` informs the broker that one of its connections has been closed.

```
struct acceptor_closed_msg {
    io::accept_handle handle;
};
```

A `acceptor_closed_msg` informs the broker that of its acceptors has been closed.

## 14 Group Communication

*libcppa* supports publish/subscribe-based group communication. Actors can join and leave groups and send messages to groups.

```
std::string group_module = ...;
std::string group_id = ...;
auto grp = group::get(group_module, group_id);
self->join(grp);
self->send(grp, atom("test"));
self->leave(grp);
```

### 14.1 Anonymous Groups

Groups created on-the-fly with `group::anonymous()` can be used to coordinate a set of workers. Each call to `group::anonymous()` returns a new, unique group instance.

### 14.2 Local Groups

The `"local"` group module creates groups for in-process communication. For example, a group for GUI related events could be identified by `group::get("local", "GUI events")`. The group ID `"GUI events"` uniquely identifies a singleton group instance of the module `"local"`.

### 14.3 Remote Groups

To deploy groups in a network, one host can act as group server by publishing its local groups at any given port:

```
void publish_local_groups(std::uint16_t port, const char* addr)
```

By calling `group::get("remote", "<group>@<host>:<port>")`, other hosts are now able to connect to a remotely running group. Please note that the group communication is no longer available once the server disconnects. This implementation uses N-times unicast underneath. It is worth mentioning that user-implemented groups can be build on top of IP multicast or overlay technologies such as Scribe to achieve better performance or reliability.

## 14.4 Spawning Actors in Groups

The function `spawn_in_group` can be used to create actors as members of a group. The function causes the newly created actors to call `join(...)` immediately and before `spawn_in_group` returns. The usage of `spawn_in_group` is equal to `spawn`, except for an additional group argument. The group handle is always the first argument, as shown in the examples below.

```
void fun1();
void fun2(int, float);
class my_actor1 : event_based_actor { /* ... */ };
class my_actor2 : event_based_actor {
    // ...
    my_actor2(const std::string& str) { /* ... */ }
};
// ...
auto grp = group::get(...);
auto a1 = spawn_in_group(grp, fun1);
auto a2 = spawn_in_group(grp, fun2, 1, 2.0f);
auto a3 = spawn_in_group<my_actor1>(grp);
auto a4 = spawn_in_group<my_actor2>(grp, "hello my_actor2!");
```

## 15 Platform-Independent Type System

*libcppa* provides a fully network transparent communication between actors. Thus, *libcppa* needs to serialize and deserialize messages. Unfortunately, this is not possible using the RTTI system of C++. *libcppa* uses its own RTTI based on the class `uniform_type_info`, since it is not possible to extend `std::type_info`.

Unlike `std::type_info::name()`, `uniform_type_info::name()` is guaranteed to return the same name on all supported platforms. Furthermore, it allows to create an instance of a type by name.

```
// creates a signed, 32 bit integer
cppa::object i = cppa::uniform_typeid<int>()->create();
```

However, you should rarely if ever need to use `object` or `uniform_type_info`.

### 15.1 User-Defined Data Types in Messages

All user-defined types must be explicitly “announced” so that *libcppa* can (de)serialize them correctly, as shown in the example below.

```
#include "cppa/cppa.hpp"
using namespace cppa;

struct foo { int a; int b; };

int main() {
    announce<foo>(&foo::a, &foo::b);
    // ... foo can now safely be used in messages ...
}
```

Without the `announce` function call, the example program would terminate with an exception, because *libcppa* rejects all types without available runtime type information.

`announce()` takes the class as template parameter and pointers to all members (or getter/setter pairs) as arguments. This works for all primitive data types and STL compliant containers. See the announce examples 1 – 4 of the standard distribution for more details.

Obviously, there are limitations. You have to implement `serialize/deserialize` by yourself if your class does implement an unsupported data structure. See `announce_example_5.cpp` in the examples folder.

## 16 Blocking API

Besides event-based actors (the default implementation), *libcppa* also provides context-switching and thread-mapped actors that can make use of the blocking API. Those actor implementations are intended to ease migration of existing applications or to implement actors that need to have access to blocking receive primitives for other reasons.

Event-based actors differ in receiving messages from context-switching and thread-mapped actors: the former define their behavior as a message handler that is invoked whenever a new messages arrives in the actor's mailbox (by using `become`), whereas the latter use an explicit, blocking receive function.

### 16.1 Receiving Messages

The function `receive` sequentially iterates over all elements in the mailbox beginning with the first. It takes a partial function that is applied to the elements in the mailbox until an element was matched by the partial function. An actor calling `receive` is blocked until it successfully dequeued a message from its mailbox or an optional timeout occurs.

```
self->receive (
  on<int>().when(_x1 > 0) >> // ...
);
```

The code snippet above illustrates the use of `receive`. Note that the partial function passed to `receive` is a temporary object at runtime. Hence, using `receive` inside a loop would cause creation of a new partial function on each iteration. *libcppa* provides three predefined receive loops to provide a more efficient but yet convenient way of defining receive loops.



<pre>//DON'T  for (;;) {     receive (         // ...     ); }  std::vector&lt;int&gt; results; for (size_t i = 0; i &lt; 10; ++i) {     receive (         on&lt;int&gt;() &gt;&gt; [&amp;](int value) {             results.push_back(value);         }     ); }  size_t received = 0; do {     receive (         others() &gt;&gt; [&amp;]() {             ++received;         }     ); } while (received &lt; 10);</pre>	<pre>//DO  receive_loop (     // ... );  std::vector&lt;int&gt; results; size_t i = 0; receive_for(i, 10) (     on&lt;int&gt;() &gt;&gt; [&amp;](int value) {         results.push_back(value);     } );  size_t received = 0; do_receive (     others() &gt;&gt; [&amp;]() {         ++received;     } ).until(gref(received) &gt;= 10);</pre>
---	---

The examples above illustrate the correct usage of the three loops `receive_loop`, `receive_for` and `do_receive(...).until`. It is possible to nest receives and receive loops.

```
self->receive_loop (
    on<int>() >> [&](int value1) {
        self->receive (
            on<float>() >> [&](float value2) {
                cout << value1 << " ==> " << value2 << endl;
            }
        );
    }
);
```

## 16.2 Receiving Synchronous Responses

Analogous to `sync_send(...).then(...)` for event-based actors, blocking actors can use `sync_send(...).await(...)`.

```
void foo(blocking_actor* self, actor testee) {  
    // testee replies with a string to 'get'  
    self->sync_send(testee, atom("get")).await(  
        [&](const std::string& str) {  
            // handle str  
        },  
        after(std::chrono::seconds(30)) >> [&]() {  
            // handle error  
        }  
    );  
}
```

## 17 Strongly Typed Actors

Strongly typed actors provide a convenient way of defining type-safe messaging interfaces. Unlike untyped actors, typed actors are not allowed to use guard expressions. When calling `become` in a strongly typed actor, *all* message handlers from the typed interface must be set.

Typed actors use handles of type `typed_actor<...>` rather than `actor`, whereas the template parameters hold the messaging interface. For example, an actor responding to two integers with a double would use the type `typed_actor<replies_to<int, int>::with<double>>`. All functions for message passing, linking and monitoring are overloaded to accept both types of actors.

### 17.1 Spawning Typed Actors

Typed actors are spawned using the function `spawn_typed`. The argument to this function call *must* be a match expression as shown in the example below, because the runtime of `libc++` needs to evaluate the signature of each message handler.

```
auto p0 = spawn_typed(
    on_arg_match >> [] (int a, int b) {
        return static_cast<double>(a) * b;
    },
    on_arg_match >> [] (double a, double b) {
        return make_cow_tuple(a * b, a / b);
    }
);
// assign to identical type
using full_type = typed_actor_ptr<
    replies_to<int, int>::with<double>,
    replies_to<double, double>::with<double, double>
>;
full_type p1 = p0;
// assign to subtype
using subtype1 = typed_actor_ptr<
    replies_to<int, int>::with<double>
>;
subtype1 p2 = p0;
// assign to another subtype
using subtype2 = typed_actor_ptr<
    replies_to<double, double>::with<double, double>
>;
subtype2 p3 = p0;
```

## 17.2 Class-based Typed Actors

Typed actors are spawned using the function `spawn_typed` and define their message passing interface as list of `replies_to<...>::with<...>` statements. This interface is used in (1) `typed_event_based_actor<...>`, which is the base class for typed actors, (2) the handle type `typed_actor<...>`, and (3) `typed_behavior<...>`, i.e., the behavior definition for typed actors. Since this is rather redundant, the actor handle provides definitions for the behavior as well as the base class, as shown in the example below. It is worth mentioning that all typed actors always use the event-based implementation, i.e., there is no typed actor implementation providing a blocking API.

```
struct shutdown_request { };
struct plus_request { int a; int b; };
struct minus_request { int a; int b; };

typedef typed_actor<replies_to<plus_request>::with<int>,
                  replies_to<minus_request>::with<int>,
                  replies_to<shutdown_request>::with<void>>
    calculator_type;

calculator_type::behavior_type
typed_calculator(calculator_type::pointer self) {
    return {
        [](const plus_request& pr) {
            return pr.a + pr.b;
        },
        [](const minus_request& pr) {
            return pr.a - pr.b;
        },
        [=](const shutdown_request&) {
            self->quit();
        }
    };
}

class typed_calculator_class : public calculator_type::base {
protected: behavior_type make_behavior() override {
    return {
        [](const plus_request& pr) {
            return pr.a + pr.b;
        },
        [](const minus_request& pr) {
            return pr.a - pr.b;
        },
        [=](const shutdown_request&) {
            quit();
        }
    };
}
};
```

```

void tester(event_based_actor* self, const calculator_type& testee) {
    self->link_to(testee);
    // will be invoked if we receive an unexpected response message
    self->on_sync_failure([=] {
        aout(self) << "AUT (actor under test) failed" << endl;
        self->quit(exit_reason::user_shutdown);
    });
    // first test: 2 + 1 = 3
    self->sync_send(testee, plus_request{2, 1}).then(
        [=](int r1) {
            assert(r1 == 3);
            // second test: 2 - 1 = 1
            self->sync_send(testee, minus_request{2, 1}).then(
                [=](int r2) {
                    assert(r2 == 1);
                    // both tests succeeded
                    aout(self) << "AUT (actor under test) "
                        << "seems to be ok"
                        << endl;
                    self->send(testee, shutdown_request{});
                }
            );
        }
    );
}

int main() {
    // announce custom message types
    announce<shutdown_request>();
    announce<plus_request>(&plus_request::a, &plus_request::b);
    announce<minus_request>(&minus_request::a, &minus_request::b);
    // test function-based impl
    spawn(tester, spawn_typed(typed_calculator));
    await_all_actors_done();
    // test class-based impl
    spawn(tester, spawn_typed<typed_calculator_class>());
    await_all_actors_done();
    // done
    shutdown();
    return 0;
}

```

## 18 Common Pitfalls

### 18.1 Event-Based API

- The functions `become` and `handle_response` do not block, i.e., always return immediately. Thus, one should *always* capture by value in lambda expressions, because all references on the stack will cause undefined behavior if the lambda expression is executed.

### 18.2 Synchronous Messages

- A handle returned by `sync_send` represents *exactly one* response message. Therefore, it is not possible to receive more than one response message.
- The handle returned by `sync_send` is bound to the calling actor. It is not possible to transfer a handle to a response to another actor.

### 18.3 Sending Messages

- `send(whom, ...)` is defined as `send_tuple(whom, make_any_tuple(...))`. Hence, a message sent via `send(whom, self->last_dequeued())` will not yield the expected result, since it wraps `self->last_dequeued()` into another `any_tuple` instance. The correct way of forwarding messages is `self->forward_to(whom)`.

### 18.4 Sharing

- It is strongly recommended to **not** share states between actors. In particular, no actor shall ever access member variables or member functions of another actor. Accessing shared memory segments concurrently can cause undefined behavior that is incredibly hard to find and debug. However, sharing *data* between actors is fine, as long as the data is *immutable* and its lifetime is guaranteed to outlive all actors. The simplest way to meet the lifetime guarantee is by storing the data in smart pointers such as `std::shared_ptr`. Nevertheless, the recommended way of sharing informations is message passing. Sending data to multiple actors does not necessarily result in copying the data several times. Read Section 3 to learn more about *libcoppa*'s copy-on-write optimization for tuples.

### 18.5 Constructors of Class-based Actors

- You should **not** try to send or receive messages in a constructor or destructor, because the actor is not fully initialized at this point.

## 19 Appendix

### 19.1 Class `option`

Defined in header "`cppa/option.hpp`".

```
template<typename T>
class option;
```

Represents an optional value.

#### Member types

Member type	Definition
type	T

#### Member Functions

<code>option()</code>	Constructs an empty option
<code>option(T value)</code>	Initializes <code>this</code> with <code>value</code>
<code>option(const option&amp;)</code> <code>option(option&amp;&amp;)</code>	Copy/move construction
<code>option&amp; operator=(const option&amp;)</code> <code>option&amp; operator=(option&amp;&amp;)</code>	Copy/move assignment

#### Observers

<code>bool valid()</code> <code>explicit operator bool()</code>	Returns <code>true</code> if <code>this</code> has a value
<code>bool empty()</code> <code>bool operator!()</code>	Returns <code>true</code> if <code>this</code> does <b>not</b> has a value
<code>const T&amp; get()</code> <code>const T&amp; operator*()</code>	Access stored value
<code>const T&amp; get_or_else(const T&amp; x)</code>	Returns <code>get()</code> if valid, <code>x</code> otherwise

#### Modifiers

<code>T&amp; get()</code> <code>T&amp; operator*()</code>	Access stored value
--	---------------------

## 19.2 Using `cout` – A Concurrency-safe Wrapper for `cout`

When using `cout` from multiple actors, output often appears interleaved. Moreover, using `cout` from multiple actors – and thus from multiple threads – in parallel should be avoided regardless, since the standard does not guarantee a thread-safe implementation.

By replacing `std::cout` with `cppa::aout`, actors can achieve a concurrency-safe text output. The header `cppa/cppa.hpp` also defines overloads for `std::endl` and `std::flush` for `aout`, but does not support the full range of ostream operations (yet). Each write operation to `aout` sends a message to a ‘hidden’ actor (keep in mind, sending messages from actor constructors is not safe). This actor only prints lines, unless output is forced using `flush`. The example below illustrates printing of lines of text from multiple actors (in random order).

```
#include <chrono>
#include <cstdlib>
#include <iostream>
#include "cppa/cppa.hpp"

using namespace cppa;
using std::endl;

int main() {
    std::srand(std::time(0));
    for (int i = 1; i <= 50; ++i) {
        spawn<blocking_api>([i](blocking_actor* self) {
            aout(self) << "Hi there! This is actor nr. "
                        << i << "!" << endl;
            std::chrono::milliseconds tout{std::rand() % 1000};
            self->delayed_send(self, tout, atom("done"));
            self->receive(others() >> [i, self] {
                aout(self) << "Actor nr. "
                        << i << " says goodbye!" << endl;
            });
        });
    }
    // wait until all other actors we've spawned are done
    await_all_actors_done();
    // done
    shutdown();
    return 0;
}
```